



# foster transformer company

<http://www.foster-transformer.com>



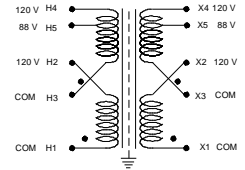
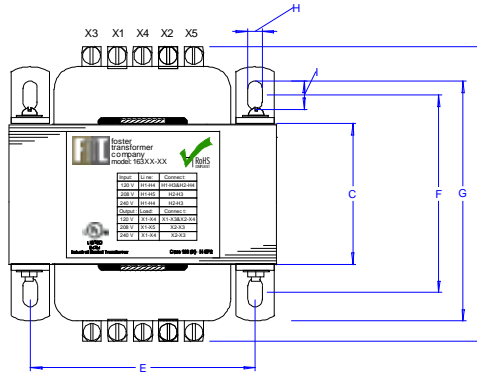
Look for this symbol to identify products that comply with the Buy American provisions of the American Reinvestment and Recovery Act of 2009 (ARRA), the Trade Agreements Act of 1979 (TAA), the Buy American Act of 1933 (BAA), and Federal Acquisitions Regulations subpart 25.1 (FAR).

## The Standard of Quality Since 1937

3820 colerain avenue ♦ cincinnati, oh 45223-2586 ♦ phone:(513)681-2420 ♦ fax:(513)681-2424 ♦ toll free:(800)963-9799

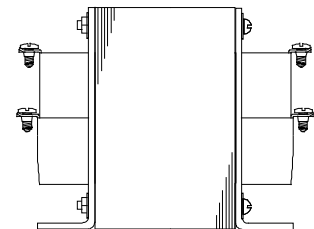
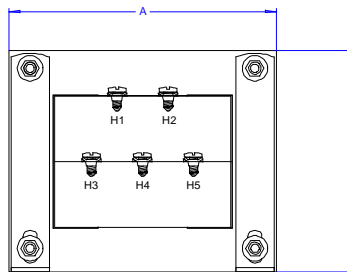


## 1:1-2:1-1:2 Isolation Transformers:



Input:	Line:	Connect:
120 V	H1-H4	H1-H3&H2-H4
208 V	H1-H5	H2-H3
240 V	H1-H4	H2-H3
Output:	Load:	Connect:
120 V	X1-X4	X1-X3&X2-X4
208 V	X1-X5	X2-X3
240 V	X1-X4	X2-X3

- Input Voltages: 120/208/240 V, 50/60 Hz.
- Output Voltages: 120/208/240 V, 50/60 Hz.
- Power Ratings: 0.025 kVA (25 VA) to 5.0 kVA.
- Electrostatic Shield between Windings for Safety and Suppression of transients and electrical noise..
- UL Listed and C-UL Certified, UL 5085 / CSA 22.2No.66,UL File Number: E19598.
- EN 61558-1 Compliant Designs Available.
- Suitable for Use with Medical EN 60601-1 Devices.
- Higher Efficiency & Lower Temperature Rise than competitors.
- Class 180 Insulation Systems for long life.



Ideal for use in adapting equipment for International Use. Flexible configuration may be used in 1:1 isolation or 2:1 step-down or 1:2 step-up configuration. Suitable for use in medical equipment to isolate commercial devices from mains power. May be used to protect sensitive equipment subjected noisy industrial power lines.

Model:	Capacity:	A	B	C	D	E	F	G	H	I
16340	0.025 kVA	2 11/16	2 1/4	1	3	2 3/16	2	2 5/8	13/64	3/8
16341	0.050 kVA	3 1/16	2 9/16	1	3	2 1/2	2	2 5/8	13/64	3/8
16342	0.075 kVA	3 1/16	2 9/16	1 1/2	3 1/2	2 1/2	2 1/2	3 1/8	13/64	3/8
16343	0.100 kVA	3 7/16	2 7/8	1 3/8	3 3/8	2 13/16	2 3/8	3	13/64	3/8
16344	0.150 kVA	3 13/16	3 3/16	1 7/8	4 1/8	3 1/8	2 7/8	3 1/2	13/64	3/8
16345	0.175 kVA	3 13/16	3 3/16	1 7/8	4 1/8	3 1/8	2 7/8	3 1/2	13/64	3/8
16346	0.200 kVA	4 9/16	3 13/16	1 3/8	4 3/8	3 3/4	2 3/8	3	13/64	3/8
16347	0.250 kVA	4 9/16	3 13/16	1 7/8	4 7/8	3 3/4	2 7/8	3 1/2	13/64	3/8
16348	0.350 kVA	4 9/16	3 13/16	2 3/4	5 3/4	3 3/4	3 7/8	5 1/8	9/32	9/16
16349	0.500 kVA	5 5/16	4 7/16	2 3/4	6	4 3/8	3 7/8	5 1/8	9/32	9/16
16350	0.750 kVA	5 5/16	4 7/16	4	7 1/4	4 3/8	5 1/8	6 3/8	9/32	9/16
16351	1.000 kVA	6 1/2	5 7/16	3	6 5/8	5 5/16	4 1/2	5 7/8	5/16	11/16
16352	1.500 kVA	7 3/16	6 3/16	3 3/8	7 1/2	5 13/16	4 7/8	6 1/4	5/16	11/16
16353	2.000 kVA	7 3/16	6 3/16	4 1/4	8 3/8	5 13/16	5 3/4	7 1/8	5/16	11/16
16354	3.000 kVA	9 1/8	8 1/4	3 1/2	9	8	5 3/4	7 1/2	3/8	1
16355	5.000 kVA	9 1/8	8 1/4	6	11 1/2	8	8 1/4	10	3/8	1



# foster transformer company

<http://www.foster-transformer.com>



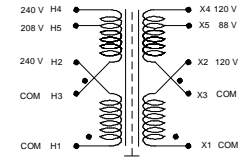
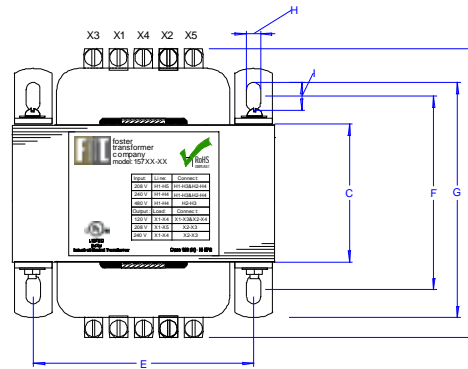
Look for this symbol to identify products that comply with the Buy American provisions of the American Reinvestment and Recovery Act of 2009 (ARRA), the Trade Agreements Act of 1979 (TAA), the Buy American Act of 1933 (BAA), and Federal Acquisitions Regulations subpart 25.1 (FAR).

## The Standard of Quality Since 1937

3820 colerain avenue ♦ cincinnati, oh 45223-2586 ♦ phone:(513)681-2420 ♦ fax:(513)681-2424 ♦ toll free:(800)963-9799

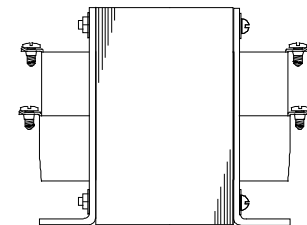
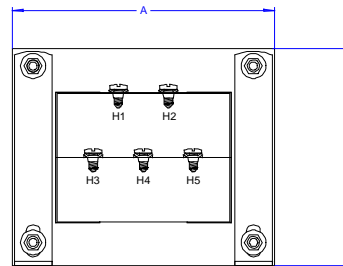


## Isolation Transformers:



Input:	Line:	Connect:
208 V	H1-H5	H1-H3&H2-H4
240 V	H1-H4	H1-H3&H2-H4
480 V	H1-H4	H2-H3
Output:	Load:	Connect:
120 V	X1-X4	X1-X3&X2-X4
208 V	X1-X5	X2-X3
240 V	X1-X4	X2-X3

- Input Voltages: 208/240/480 V, 50/60 Hz.
- Output Voltages: 120/208/240 V, 50/60 Hz.
- Power Ratings: 0.025 kVA (25 VA) to 5.0 kVA.
- Electrostatic Shield between Windings for Safety and Suppression of transients and electrical noise..
- UL Listed and C-UL Certified, UL 5085 / CSA 22.2No.66,UL File Number: E19598.
- EN 61558-1 Compliant Designs Available.
- Higher Efficiency & Lower Temperature Rise than competitors.
- Class 180 Insulation Systems for long life.
- Suitable for use in Elevated Ambients.
- Custom configurations are available.



Ideal for use in adapting equipment designed to operate from commercial voltages to higher industrial voltages. May be used in a 1:1 isolation or 2:1 step-down configuration to adapt equipment designed for the North American market for Global Sales. Common applications include Industrial Controls, Commercial Appliances, Medical Equipment, Machine Tool Equip.

Model:	Capacity:	A	B	C	D	E	F	G	H	I
15740	0.025 kVA	2 11/16	2 1/4	1	3	2 3/16	2	2 5/8	13/64	3/8
15741	0.050 kVA	3 1/16	2 9/16	1	3	2 1/2	2	2 5/8	13/64	3/8
15742	0.075 kVA	3 1/16	2 9/16	1 1/2	3 1/2	2 1/2	2 1/2	3 1/8	13/64	3/8
15743	0.100 kVA	3 7/16	2 7/8	1 3/8	3 3/8	2 13/16	2 3/8	3	13/64	3/8
15744	0.150 kVA	3 13/16	3 3/16	1 7/8	4 1/8	3 1/8	2 7/8	3 1/2	13/64	3/8
15745	0.175 kVA	3 13/16	3 3/16	1 7/8	4 1/8	3 1/8	2 7/8	3 1/2	13/64	3/8
15746	0.200 kVA	4 9/16	3 13/16	1 3/8	4 3/8	3 3/4	2 3/8	3	13/64	3/8
15747	0.250 kVA	4 9/16	3 13/16	1 7/8	4 7/8	3 3/4	2 7/8	3 1/2	13/64	3/8
15748	0.350 kVA	4 9/16	3 13/16	2 3/4	5 3/4	3 3/4	3 7/8	5 1/8	9/32	9/16
15749	0.500 kVA	5 5/16	4 7/16	2 3/4	6	4 3/8	3 7/8	5 1/8	9/32	9/16
15750	0.750 kVA	5 5/16	4 7/16	4	7 1/4	4 3/8	5 1/8	6 3/8	9/32	9/16
15751	1.000 kVA	6 1/2	5 7/16	3	6 5/8	5 5/16	4 1/2	5 7/8	5/16	11/16
15752	1.500 kVA	7 3/16	6 3/16	3 3/8	7 1/2	5 13/16	4 7/8	6 1/4	5/16	11/16
15753	2.000 kVA	7 3/16	6 3/16	4 1/4	8 3/8	5 13/16	5 3/4	7 1/8	5/16	11/16
15754	3.000 kVA	9 1/8	8 1/4	3 1/2	9	8	5 3/4	7 1/2	3/8	1
15755	5.000 kVA	9 1/8	8 1/4	6	11 1/2	8	8 1/4	10	3/8	1