



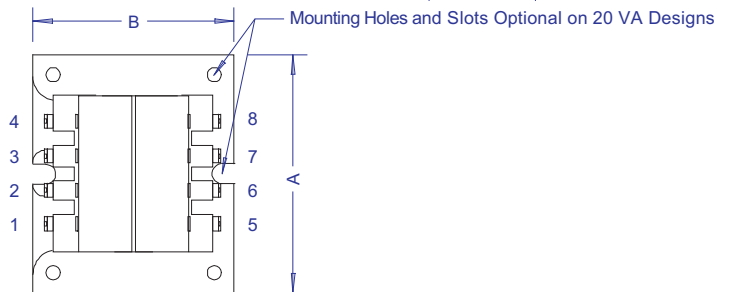
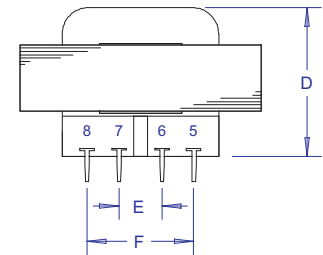
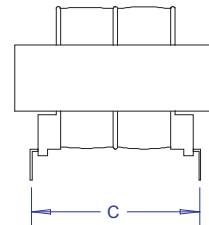
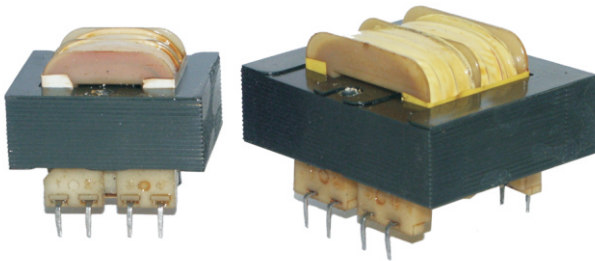
**foster  
transformer  
company**

*The Standard of Quality Since 1937*

<http://www.foster-transformer.com>

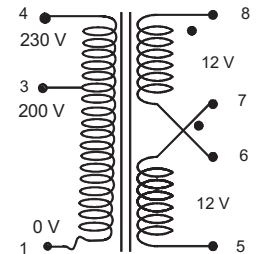
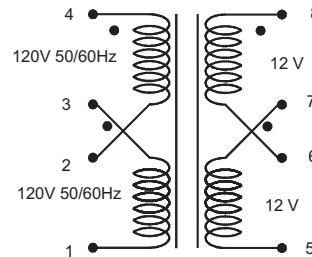
3820 colerain avenue ♦ cincinnati, oh 45223-2586 ♦ phone:(513)681-2420 ♦ fax:(513)681-2424 ♦ toll free:(800)963-9799

## PRINTED CIRCUIT MOUNT CLASS 2 TRANSFORMERS:



- ✓ UL / C-UL Recognized. UL File: E17029.
- ✓ All Models, Class 2 Inherently Limited.
- ✓ UL Recognized Class 130 (B) Insulation System.
- ✓ Ideal for Board Mounted Controls.
- ✓ Thermal fuses standard on 20 VA Models.

Designed for use in Appliances, Vending Machines, HVAC Equipment, Test Equipment, Door Openers, Industrial and Motor Controls or any application where a board mounted Class 2 Control Transformer is an advantage.



Transformers with single primary windings terminate on pins 1 & 4.

Transformers with single secondary windings terminate on pins 5 & 8.

Model:	Input:	Frequency:	Output:	Capacity:	A	B	C	D	E	F
16080-PC	115 V	50/60 Hz	12 V	5 VA	1 5/8	1 5/16	1.29	1 3/16	0.35	0.85
16081-PC	115/230 V	50/60 Hz	12 V	5 VA	1 5/8	1 5/16	1.29	1 3/16	0.35	0.85
16082-PC	200/230 V	50/60 Hz	12 V	5 VA	1 5/8	1 5/16	1.29	1 3/16	0.35	0.85
16083-PC	115 V	50/60 Hz	12/24	5 VA	1 5/8	1 5/16	1.28	1 5/16	0.35	0.85
16084-PC	115/230 V	50/60 Hz	12/24	5 VA	1 5/8	1 5/16	1.28	1 5/16	0.35	0.85
16085-PC	200/230 V	50/60 Hz	12/24	5 VA	1 5/8	1 5/16	1.28	1 5/16	0.35	0.85
16086-PC	115 V	50/60 Hz	12 V	20 VA	2 1/4	1 7/8	1.59	1 7/16	0.40	1.00
16087-PC	115/230 V	50/60 Hz	12 V	20 VA	2 1/4	1 7/8	1.59	1 7/16	0.40	1.00
16088-PC	200/230 V	50/60 Hz	12 V	20 VA	2 1/4	1 7/8	1.59	1 7/16	0.40	1.00
16089-PC	115 V	50/60 Hz	12/24	20 VA	2 1/4	1 7/8	1.59	1 7/16	0.40	1.00
16090-PC	115/230 V	50/60 Hz	12/24	20 VA	2 1/4	1 7/8	1.59	1 7/16	0.40	1.00
16091-PC	200/230 V	50/60 Hz	12/24	20 VA	2 1/4	1 7/8	1.59	1 7/16	0.40	1.00