

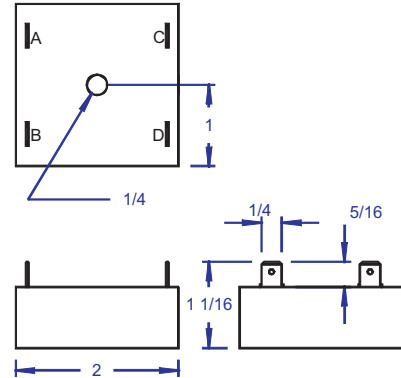
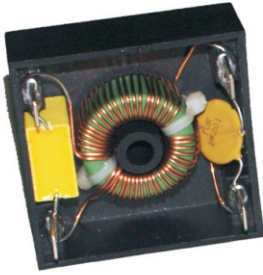
**foster
transformer
company**

The Standard of Quality Since 1937

<http://www.foster-transformer.com>

3820 colerain avenue ♦ cincinnati, oh 45223-2586 ♦ phone:(513)681-2420 ♦ fax:(513)681-2424 ♦ toll free:(800)963-9799

EMI FILTERS WITH OPTIONAL SURGE SUPPRESSION:



APPLICATIONS:

- ✓ Appliance
- ✓ Medical
- ✓ Industrial
- ✓ Motor Control
- ✓ Lighting
- ✓ Recreational Vehicles

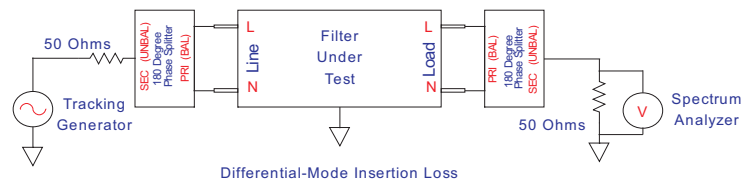
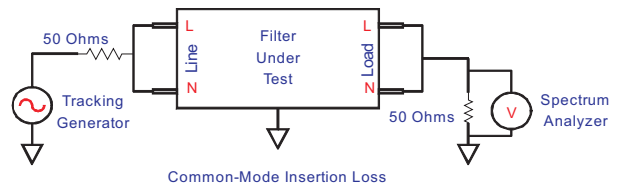
BENEFITS:

- ✓ Comply with UL 1283 and EN 133200 Requirements.
- ✓ UL 94 V0 Enclosure.
- ✓ Low Cost, Quick Installation.
- ✓ Low Leakage Current.
- ✓ Ideal for Retrofit Applications.

Compact EMI filter modules provide high levels of EMI suppression in a convenient, low cost package. Standard models incorporate 5.0 mH common mode inductors suitable for up to 6 amps.

Optional bypass capacitors provide increased differential mode noise rejection and optional MOVs provide protection against line transients.

Custom configurations and multiple stage filters are available by special order.



TYPICAL INSERTION LOSS:

		10 kHz	100 kHz	1.0 MHz	10 MHz	100 MHz
A-16015	Common Mode:	-10.44dBm	-29.73dBm	-36.44dBm	-24.51dBm	-8.87dBm
	Differential Mode:	-0.15 dBm	-1.81dBm	-3.80 dBm	-18.71dBm	-8.04dBm
A-16039 (100-120 V Line)	Common Mode:	-7.91 dBm	-28.05 dBm	-37.06 dBm	-20.57 dBm	-2.84 dBm
	Differential Mode:	-1.35 dBm	-15.35 dBm	-43.76 dBm	-76.07 dBm	-47.20dBm
A-16040 (200-240 V Line)	Common Mode:	-7.91 dBm	-28.05 dBm	-37.06 dBm	-20.57 dBm	-2.84 dBm
	Differential Mode:	-1.35 dBm	-15.35 dBm	-43.76 dBm	-76.07 dBm	-47.20dBm

Insertion loss data provided are typical and are not intended to indicate actual in circuit performance. EMI testing should be conducted in end application to verify compliance.